



# The Grapevine



## *A Cornucopia of Blessings*

**Reverend Edward Dunn**

1. Almost was...

I had very different expectations of October. It was supposed to be the month when UPC would welcome our colleagues in Peace River Presbytery. It almost was....but Hurricane's Helene and Milton changed our plans. The in-person meeting scheduled at our church on October 19 was cancelled, due to the storms locally and for other congregations affected by nature's fury. Instead an abbreviated meeting of the presbytery will take place via Zoom on Saturday, November 2.

It may have been an "almost was" moment, but one thing wasn't...your willingness to host our friends and to do the hard work of preparing. Thank you for your preliminary work and preparation for this event. I hope that we will have another opportunity to host the presbytery in the future.



## 2. Going to be...

I am happy to share the news that UPC has extended our partnership with Palma Sola Elementary; a relationship that has existed for many years. The Pen Pals program with second graders continues, and our support of the staff and the donation of school supplies is now extended to an official listing of partners with the school. We will join other groups at PSE's Harvest Festival on Saturday, Nov. 2.

Our Outreach Team leads our connection with the school, and welcomes others who want to expand our work and relationship with this important neighbor. If you'd like to learn more, contact Andrea Harmon or Donna Lesch.

## 3. We can make it happen...

Building on our deepened relationship with Palma Sola Elementary, we are planning a holiday event: a Candy Cane Carnival on December 14 from 3-5pm. Check out the report from Outreach about this fun-filled afternoon of games, food, and holiday cheer.

And...UPC is now a contributor to STREAM (Stronger Together Reaching Equality Across Manatee). STREAM is a community action group that seeks to work with officials of Manatee County on issues affecting citizens. This year's emphasis is on mental health of children and youth, and affordable housing. Several members have attended community forums and more of us are encouraged to join the momentum created by churches in the area.

## 4. You are vital...

Everything I've written about happens because you are involved. From the writing of a letter to a child to attending community forums, you are important to its success. Your financial gifts of support help us fund these projects; help us with the repair and upkeep of our church facility; and provide income for our hard-working staff so they can devote more of their energies to the work of the church.

November is a month of thankfulness. Blessings abound throughout our congregation and its members. Thank you for sharing your blessings with others.

Blessings  
Edward

# October Session Highlights

- Approved four budgeted distributions to the Salvation Army, the Immokalee Fair Housing Initiative, The Food Bank of Manatee, and Misión Peniel's Christmas Joy Drive totaling \$2,000.
- Approved membership in STREAM, an organization of interested churches that works with local government leaders to focus on addressing the mental health needs of children and youth in Manatee County.
- Approved a non-budgeted expenditure of \$4,475 for storm-damaged tree removal, staging for emergency pick-up and stump grinding as a consequence of Hurricane Milton.
- Concurred with postponing the October 19th Presbytery Meeting to be held at United, in favor of a Zoom meeting on November 2nd.
- Approved vacation for Rev. Dunn during November 14th - 20th with a pulpit supply planned for November 18th and the Session meeting rescheduled to November 25th.
- Noted that the Presbytery's Annual Review of church books (Session Minutes and Church Rolls) was successfully completed on September 24th.
- Endorsed rescheduling the Hope Seeds Packing Event to January 18th, prompted by Hurricane Milton.
- Endorsed becoming a 'Sponsor' at Palma Sola Elementary School, which provides increased visibility for our involvement there.
- Applauded the work of the Stewardship Committee in developing the short video clips to highlight the numerous ministries that are supported by the generosity of our members and friends.

## Stewardship News Flash

The Stewardship Package will be distributed on Sunday November 3, 2024. Any remaining Stewardship Packages will be mailed Monday November 4, 2024.

If you do not receive it by Wednesday November 6, 2024, please contact Gregg Pead's cell 941-348-0773 or email [peedethree@gmail.com](mailto:peedethree@gmail.com).

Please let Gregg know whether to leave a copy at the church for you with Dina or email you a copy. If email, provide Gregg with your email address.

# November Outreach Update

As we enjoy cooler weather, football games, and the migration south of our snowbirds we are very busy reaching out to share the love of Christ with the community and each other.

## **Recap of October events and programs:**

- You generously gave monetary contributions to Presbyterian Disaster Assistance to help with hurricane recovery and other crisis around the world.
- Folks volunteered every Friday at Our Daily Bread.
- You donated much needed warm clothes and blankets to help keep clients of Turning Points warm this winter.
- You made an additional 300 PB&J sandwiches that helped feed hungry clients of Our Daily Bread in Bradenton.
- You supported important local and international ministries through the donation from budgeted funds of \$500 each to The Salvation Army, the Immokalee Fair Housing Initiative, The Food Bank of Manatee, and Mision Peniel's Christmas Joy Campaign.
- You helped advance the work of social justice in our local community by becoming a member congregation of STREAM – Stronger Together Reaching Equality Across Manatee. This is a grassroots, non-partisan faith-based community organization that aims to take direct action against poverty and injustices in Manatee County.

## **November Outreach Opportunities:**

- Our DOES It (Done On Every Sunday) project for November is collecting stuffed shoe boxes to give to clients served by Meals on Wheels PLUS this Christmas. Pick up a Christmas wrapped shoe box and wish list in the Narthex or Church Office, fill it up and return it to the church by Sunday 12/1. Items can include lotion, lip balm, books, slipper socks, holiday themed items and more. Full instructions are included in each box. Filled boxes will be delivered to seniors throughout the holidays and are sometimes the only gift a senior will receive.
- Our church family will once again be supporting the Salvation Army Angel Tree. During the month of November, we will be accepting monetary donations so that The Salvation Army can provide gifts to those Manatee County “angels” whose tags don't get chosen from a tree. To donate, use the offering envelopes during worship or mail a check to the church office by 12/1 with “Angel Tree” in the memo line.
- We are excited to participate in Palma Sola Elementary's annual Harvest Round-up fall festival this year! United is sponsoring a booth and we are looking for volunteers to help on Saturday, November 2nd from 11am-2pm at the school. All supplies will be provided, we just need friendly faces to help join in the fun. Contact Donna Lesch or the church office if you are interested in participating.
- As part of the sub- group “Education and Literacy “ of our Outreach Committee we are going to participate in volunteer opportunities with the Suncoast Campaign for Grade-Level Reading. We learn about the simple one time events shortly before they happen, so look for them in our weekly cluster. See more information [here](#).

# November Outreach Update Continued

## Ongoing Opportunities:

- Servers for Our Daily Bread on Fridays are always needed. Contact Dorothy Simes if you would like to volunteer.
- We continue to collect non-perishable food items in the cart in the Narthex to donate to Our Daily Bread of Bradenton. They are always in need of shelf stable items to stock the shelves at the Loaves & Fishes food pantry.
- Please keep in mind our Blessing Box by the east parking lot. The Blessing Box serves as a mini food pantry for our local neighborhood, and you are welcome to add to it or take from it as needed.
- Contributions of loose change, soft money, and checks for FELT (Feeding Empty Little Tummys) are always welcome. To donate, use the envelopes in the pews or mail a check to the church office with “FELT” in the memo line.
- Join your church family in Fellowship Hall after worship each week to make PB & J sandwiches to share with the clients of Our Daily Bread. Even as we pause our fellowship hour during the summer months, we will continue to gather every Sunday for this important ministry. Thank you to all who have been bringing in supplies, making sandwiches, and helping SPREAD the love of Christ to your neighbors in need!

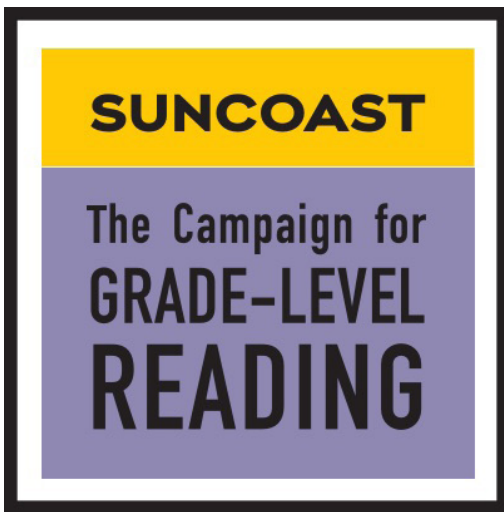
## November Outreach Offering

Our Outreach Offering for November will go to Presbyterian Disaster Assistance, the emergency and refugee program of the Presbyterian Church USA. PDA is on the ground when a disaster or crisis begins and remains active through the entire recovery process, accompanying their partners in the area to determine long-term program needs and providing financial support for rebuilding and resilience.

You may donate to Presbyterian Disaster Assistance:

- during the worship service, in your offering envelope,
- by mailing a check to the church office with “PDA” in the memo line, or
- through [online giving](#)





## Volunteer Opportunities in Education & Literacy

As part of our Education and Literacy focus, the Outreach Team plan to participate in volunteer opportunities with the Suncoast Campaign for Grade-Level Reading. We learn about the simple one-time events shortly before they happen, so look for them in our weekly cluster.

See information about the Suncoast Campaign for Grade-Level Reading below:

<https://www.gradelevelreadingsuncoast.net/the-journey-why-how/>

An alarming number of children — about 64 percent nationwide — are not proficient readers by the end of third grade. If left unchecked, this achievement gap will undermine efforts to end intergenerational poverty.

Launched in 2010, the Campaign for Grade-Level Reading focuses on five pillars to address this: School Readiness, Attendance, Summer Learning, Family Engagement, and Health Determinants. The Suncoast Campaign for Grade-Level Reading is a four-county initiative fostering wide community participation to achieve shared aspirations for the success of families and children.

To increase early-reading proficiency, the Suncoast Campaign delivers support and resources to children by mobilizing a broad base of stakeholders, tapping into expansive networks, and working with families, educators, and partners to leverage collective innovations and learnings. Programs, including Stronger Me, Stronger We, THIS BOOK IS COOL! and Pop-Up Neighbor Through Laundry seek to strengthen community, enhance healthy child and brain development, and instill a love of learning. The overall movement generates lasting impact regionally, nationally, and globally.

**CHANCEL CHOIR REHEARSALS**

**WEDNESDAYS AT 7P IN THE SANCTUARY**

**BELL CHOIR REHEARSALS**

**WEDNESDAYS AT 6P IN THE SANCTUARY**





## Salvation Army Angel Tree Donations

Our congregation has supported this program for many years. Every child deserves to enjoy the experience of joy on Christmas morning. The Salvation Army Angel Tree program helps provide Christmas gifts for hundreds of children around the country each year. The Salvation Army collects information to determine qualifications to participate in the program to assure gifts are going to children who are in need.

We will be accepting monetary donations for the Angel Tree to bless local children throughout the month of November. Use the envelopes in the pews or mail a check to the church office with “Angel Tree” in the memo line. Let’s work together to bring the joy of Christmas to children in need.



## Cyber Advisor

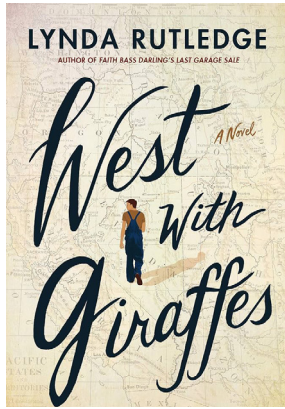
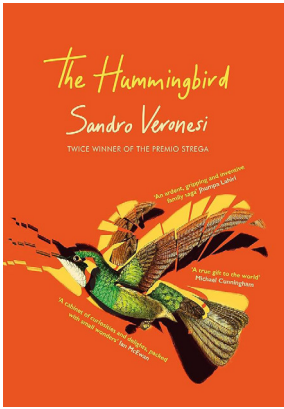
### **The Evolving Threat of Phishing Scams- A Glimpse into the Future**

Personal data is increasingly being stolen from a wide range of third parties you interact with, from the IRS and credit agencies to legal professionals and beyond. No organization is immune, and the misuse of this data is fueling more sophisticated and targeted phishing attacks.

### Best Practices for Email

1. Stay vigilant and be deliberate when checking your inbox.
2. Treat every email as suspicious until proven otherwise.
3. If an email seems off, when in doubt, delete it.
4. Only open attachments from trusted senders and when you are confident the email is genuine.
5. Never reply or click “unsubscribe” in suspicious emails, as these actions can confirm your address to scammers.

## Palma Sola Book Club



**OCT 14 | 1 - 2:30PM NOV 11 | 1 - 2:30PM**

Join in any second Monday at 12pm in the Media Center & Zoom for fun conversation.

### **2024/25 READING LIST**

For more information, call Vicki Schooley at (941) 518-2315.

## Men's Group



### **MEN'S GROUP**

You're invited to attend the Morning Men's Group. Get to know the men you see in church. Share your story. Enjoy fellowship.

#### **MEETINGS START AT 8:30A**

**NOV 7** - Fellowship and breakfast | Poppi's Place restaurant

**NOV 21** - Fellowship & a discussion about Christian Living | Fellowship Hall

Please contact Rich Wachunis  
[rwachunis@tampabay.rr.com](mailto:rwachunis@tampabay.rr.com)

## *A Thank You from The Nortons*

Dear Friends of United Presbyterian Church,

Hello! Hope this letter finds you all doing well. We pray you didn't have damage from the hurricane. We are praying for all that were in the path of the storm.

We thank you so much for the donation to Lambs of God Children's Home. We are so appreciative of your desire to stand with us as we care for the children that God has entrusted to our care.

All the children are doing well. They all just had a medical check-up. Everyone is healthy but we have noticed that Abdy is not gaining weight, and may have even lost a few pounds. It is getting increasingly harder to feed him, probably due to his high dosages of seizure medicine. It has been suggested that he may need a feeding tube so we will be looking into that with his team of specialists. We are also praying for Keily who is need of her second eye surgery. We are waiting to hear when the surgeon from the US will be coming back.

Again, thank you so much for your donation! Thank you for helping us to share the love of Jesus with these children!

Blessings,  
Carl and Lisa



# November Birthdays & Anniversaries

**NOV 3** Susan Lance

**NOV 7** Chris Lance

**NOV 13** Jack Slocum  
Mark & Chris Wolf


**NOV 16** Janice Fritzmeier

**NOV 17** Georgina Townsend

**NOV 21** Roberta Maloney  
Patrick Nannery

**NOV 22** Mary Jane Handlin  
Linda Martin

**NOV 30** Faraja Keyes



**PRAYER GROUP**  
2nd & 4th Tuesday 11a | Room 14

**HOLY STROLLERS  
WALKING GROUP** 

**JOIN US ON A WEEKLY STROLL  
TO GET SOME FRESH AIR**

**EVERY FRIDAY STARTING SEPT 27 | 9AM**

**ROBINSON PRESERVE  
(NORTH ENTRANCE)**



- United Presbyterian Church | November 2024 Newsletter -

6510 3rd Ave W.  
Bradenton, FL 34209  
941-792-3141

[pspchurch.org](http://pspchurch.org)

# November

2024

SUN	MON	TUE	WED	THU	FRI	SAT
					1	2 Presbytery MTG on Zoom   9p  PALMA SOLA ELEM. HARVEST ROUND UP   11A
3 Standard Time Begins Present Word 8:45a All Saints Service 10a   Communion	4	5 Election Day <i>Outreach / 3p</i>	6  Bell Choir   6p Chancel Choir   7p	7 MEN'S GROUP 8:30a   Popp's  <i>Renewal 6:30p</i>	8 HOLY STROLLERS   9a Our Daily Bread 9:30a	9
10 DEDICATION SUNDAY Present Word 8:45a Worship Service 10a	11 Veterans Day <i>Palma Sola Book Club / 1p</i>	12 PRAYER GROUP   11A Deacons   6:30p	13 <i>Endowment 3p</i> Finance - 3:30P Bell Choir   6p Chancel Choir   7p	14	15 HOLY STROLLERS   9a Our Daily Bread 9:30a	16
17 Present Word 8:45a Worship Service 10a	18 STREAM ANNUAL COMM. ASSEMBLY 6:30P	19	20 Bell Choir   6p Chancel Choir   7p	21 MEN'S GROUP 8:30a	22 HOLY STROLLERS   9a Our Daily Bread 9:30a Oct Grapevine Deadline	23
24 REFORMATION SUNDAY Present Word 8:45a Worship Service 10a   Fellowship	25 UPC SESSION   1p	26 PRAYER GROUP   11A	27 Bell Choir   6p Chancel Choir   7p	28 THANKSGIVING	29 HOLY STROLLERS   9a Our Daily Bread 9:30a	30

## Church Office Hours Monday - Thursday | 9am - 4pm

View the online church [Calendar](#) for latest information about Sunday worship services, Bible study, outreach and other events. Livestreamed and recorded worship services may be viewed at [Online Worship](#).